

State of Wyoming Corner Record

(In compliance with the *CORNER PERPETUATION AND FILING ACT*, Wyoming Statutes, 1997, Section 33-29-140, et. seq., and the Rules and Regulations of the Board of Registration for Professional Engineers and Professional Land Surveyors)

Reverse side of this form may be used if more space is needed.

Record of original survey and citation of source of historical information (if corner is lost or obliterated). Description of corner monumentation evidence found and/or monument and accessories established to perpetuate the location of this corner. Sketch of relative location of monument, accessories, and reference points with course and distance to adjacent corner(s) (if determined in this survey). Method and rationale for reestablishment of lost or obliterated corner.

G.L.O. Record: U.S. Deputy Surveyor Edward D. Bright, Sept. 1868; 80.00 Chains... Set a conglomerate 14 x 9 x 7 for cor. to secs. 2,3,10 & 11.

Found: 12" x 7" x 7" loosely set brown colored granite stone with 5 notches on the south edge and 2 notches on the east edge. Stone was in a small earthened collar of stones.

Set: 2 1/2" x 30" aluminum pipe with a 3 1/4" aluminum cap marked as noted below, 26" in the ground with a 1" x 1" x 2" orange flourescent colored magnetic module set in the bottom of the monument hole. Buried the original stone as a memorial east. Added a few stones to the original collar of stones. A light guage garden type steel post was found approx. 1.5' north and driven further into the ground as a witness.

LARAMIE COUNTY CLERK
 1999 JUN 21 AM 9:06
 254557

Aluminum Cap Markings
 T12N R67W

S3	S2
S10	S11

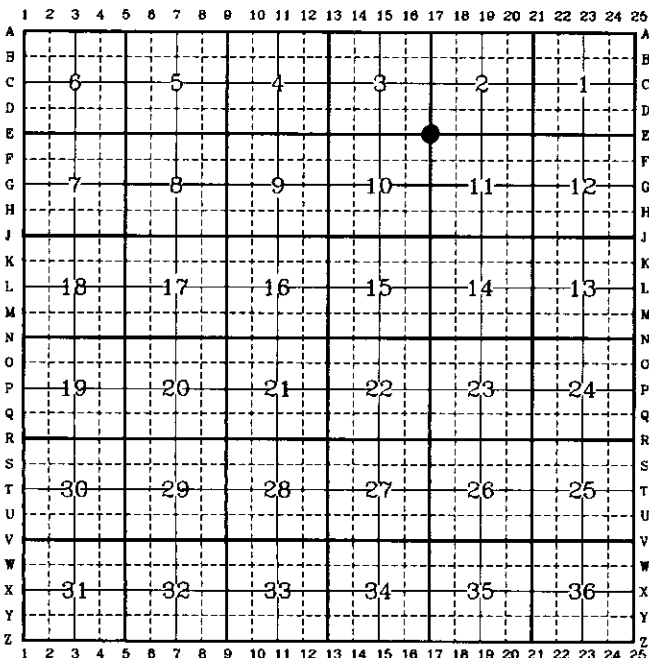
 1999
 P.L.S. 2927

See back of this sheet for section subdivision detail.

Date of Field Work: April 26, 1999

Office Reference: A.V.I. Job No. 2121

CROSS INDEX DIAGRAM



Firm/Agency, Address
 Paul A. Reid, P.L.S.
 A.V.I., p.c.
 2035 Westland Road
 Cheyenne, WY 82001

This corner record was prepared by me or under my direction and supervision.
 SEAL & SIGNATURE

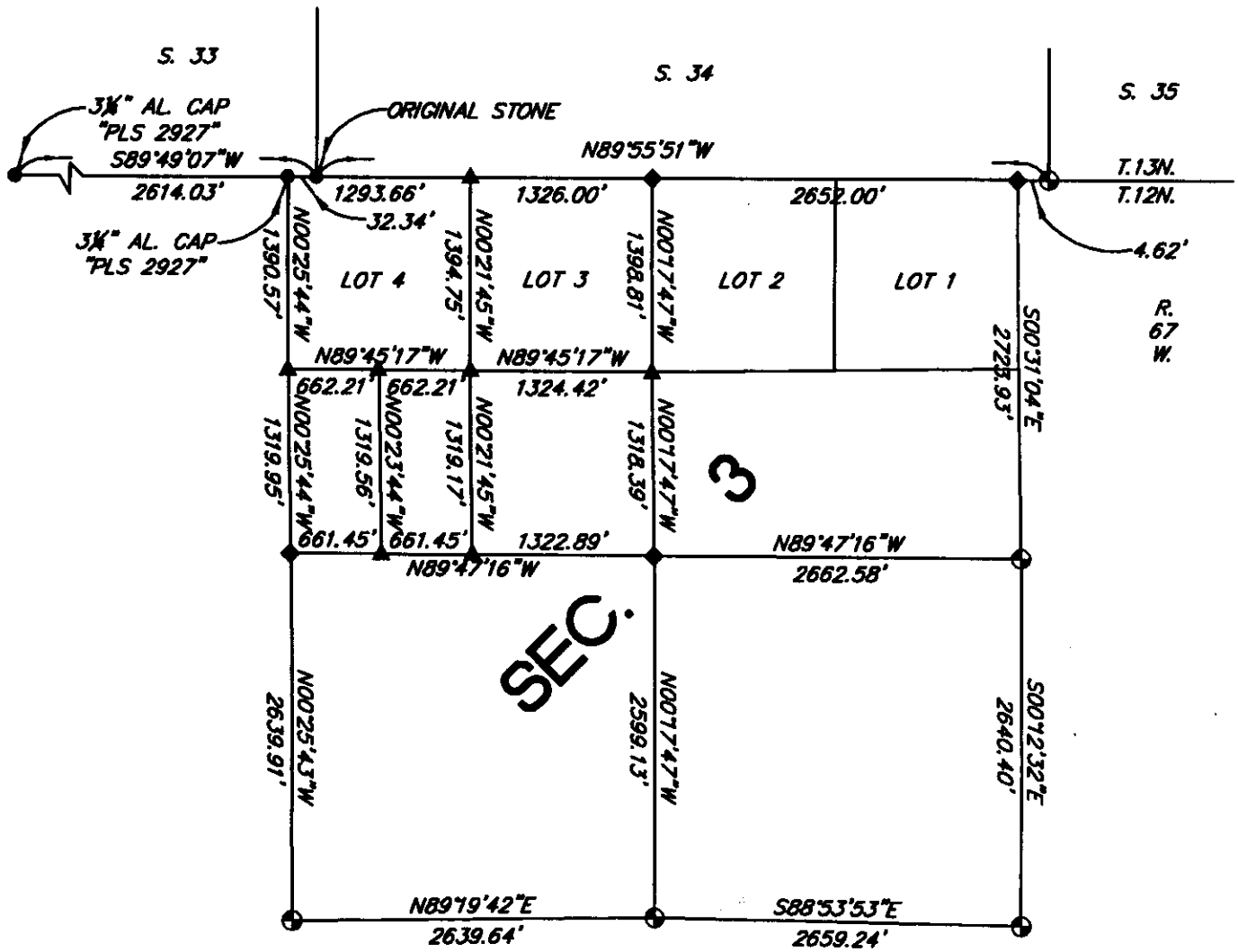
Telephone Number:
 (307) 637-6017



Corner Name: SW Cor
 SBRPEPLS/PLSW: March 1994

Section: 2

T.12N., R.67W.; 6th P.M. Cross-Index No.: E-17



SECTION SUBDIVISION DETAIL
(NOT TO SCALE)

LEGEND

- FOUND MONUMENT AS NOTED
 - ◆ SET 3/4" ALUMINUM CAP MARKED "PLS 2927"
 - ▲ SET 2 1/2" ALUMINUM CAP MARKED "PLS 2927"
 - ⊕ FOUND ORIGINAL STONE, RESET 3/4" AL. CAP MARKED "PLS 2927"
- BASIS OF BEARINGS: NAD 83 ($\Delta \alpha = 11'06''$ APPROX.)